

ONE ESTEPONA

Beachside Residences



FACT SHEET



Cosmopolitan Finish

Cosmopolitan Finish

Contemporary Chic

The Concept

Elevate your space with The Cosmopolitan concept, renowned for its sophisticated and elegant style boasting fine, delicate finishes. Its aesthetics draw inspiration from the urban and contemporary, making it the optimal choice for those seeking distinction and modernization.

The Materials

Prominent high-quality surfaces and finishes, featuring unique design elements that distinguish it from the Mediterranean style. Noble woods and innovative materials for interior design offer both technical and aesthetic solutions. Darker, more intense colours make a striking statement.



Main facade of the building.

An Elevated Experience

Your Bespoke Residence

Each residence features a composition of lines and organic curves that complement the building's outer form. Flow-through open layouts, floor-to-ceiling windows, and oversized terraces allow spaces to transition harmoniously between indoors and out. One-to-four-bedroom apartments, each offering the option of either a charming garden or a private terrace, embody the essence of refined living: open, airy, and spacious.

Residences to Follow the Rhythms of Life

We have assembled a unique team, distinguished by its composition, a successful and exclusive fusion, which executed the One Estepona project, featuring 48 limited-edition homes. Every aspect was carefully considered, from the masterfully designed communal areas to the finest detail of the interiors of the residences.

Residences Overview

Step into the perfect combination of sophistication, convenience, and sustainable living in one extraordinary location.

Spacious living areas with above-standard ceiling heights.

Floor-to-ceiling windows offer sweeping views of the Mediterranean and the Estepona mountain skyline.

Terrace access from the living room and primary bedroom in selected units.

Exquisite flooring.

Gracious walk-in wardrobes in the primary bedroom of selected units.

High-efficiency air conditioning and heating systems, with linear diffusers in main areas.

Premium Vescom® Wallcoverings.

Jung® light switches and plugs.

Interior design services provided by Numa

Home and furniture packages offered by Bolia are available for purchase.

Design Team

Architecture: Jcdiarq Architects

Interior Design: Numa HOME

Landscape: Arq GEO

Technology

Innovative smart technology infrastructure that enables home automation.

Interface system for essential building services.

Bathrooms

A realm where needs are anticipated with an intuitive understanding of when and where attention is required. Our bathrooms are created to indulge yourself in an inviting space perfect for peaceful reflection and renewal.

Saphirkeramik white sanitary fittings by Laufen®.

Select residences offer stand-alone bathtubs.

Mixer taps and head showers by Grohe®.

Thermostatic faucet in primary bathrooms
Glass-enclosed shower tray.

Vanities with premium cabinetry by Butö®.

Intense colour tiles for flooring and walls.

Kitchens

They boast a clean and contemporary aesthetic that prioritizes function and practicality. Their modern design ensures ease of maintenance without compromising on style, while adding a touch of sophistication and elevating your cooking experience to new heights.

Italian large-sized ceramic worktop and splashback by Laminam®.

Large-capacity wall and base push-touch cabinets.

High-gloss lacquered doors and fronts.

Cooking essential induction and extractor hood.

Stainless steel sinks.

Mixer taps by Grohe®.

Convection oven.

Integrated refrigerator, freezer, and dishwasher.



Indoor private terrace dining room.



Master suite bedroom.



Accessible housing terrace.

Kitchens

Chef- Inspired Kitchens

Experience top-quality brands from the moment you enter your home. Designed with every detail in mind, One Estepona is equipped with long-lasting fixtures and fittings that offer superior technical properties, versatility, and beauty, making it the perfect choice to add value to your space.



Large countertops and backsplashes blend seamlessly with sophisticated millwork, creating a timeless and perfect aesthetic. Experience innovation with premium Laminam® Italy worktops, renowned for their remarkable resistance to scratches, heat, and antibacterial properties.

Cosmopolitan Finish

LAMINAM
SUPERIOR NATURAL SURFACES

GROHE

SIEMENS

INKO

JUNG

Bathrooms

Stylish Baths

Bathrooms are meticulously designed with impeccable attention to detail. The combination of diverse materials and finishes results in a serene and inviting space, ideal for relaxation and unwinding. Thoughtfully selected ceramic tiles, glass-enclosed showers, and excellent fixtures enhance the overall ambience.



Designs in darker and more intense colours elevate your bathroom with a cosmopolitan finish, creating a sophisticated atmosphere. Incorporate a walk-in shower or bathtub, fixtures from luxury brands, and premium tiles for flooring and walls.

Cosmopolitan Finish

BUTÒ

GROHE

LAUFEN

Bolia



Butō

Luxury interpreted in an minimal form

This company offer sustainable, enduring bathroom furniture resulting from a respectful manufacturing process throughout the entire lifetime of the product. Particularly, Galiano is a collection who recognises unique style, and wishes to surround herself with items giving character to classic and modern environments, giving rise to timeless refinement.

Grohe

Technology, Design and Sustainability

The award-winning sustainable design brand plays a role in One Estepona, offering stylish taps and mixers committed to creating better homes. The exciting designs bring pure aesthetic and maximum function, preventing unnecessary warm water usage and reducing water consumption.

Laufen

Transforming the Bathroom Into a Living Environment

This collection of sanitary fixtures brings to life the dream of the perfectly designed bathroom by introducing the third generation of LAUFEN 's Saphirkeramik. Internationally acclaimed designer Patricia Urquiola takes this revolutionary ceramic into a third dimension, tearing up the rulebook of bathroom design.

Bolia

Timeless design, customised for you

Bolia is a world of new Scandinavian design, inspired by the everchanging nature that surrounds us. A collection designed by world renowned designers and handcrafted in Europe from nature 's finest materials by highly skilled craftsmen and –women.



The Club is All Yours

An Extension of Your Home

Residents will have exclusive access to over 15000 sq ft of amenities, complementing their living experience. Indoor and outdoor facilities to help you unwind, embrace vitality, and socialise while following the rhythms of your life. Discover the elegance of the Owner's Club, with two community engagement spaces graced by lofty ceilings and glass expanses, the outdoor pool with Danish-designed relaxation areas, and the Fitness Centre to unlock your potential for a healthier you.



Swimming Pool. Private cabanas are perfect for lounging and enjoying poolside service of refreshments and light bites.

Amenities & Services

Life at One Estepona comes with exclusive access to a wide range of amenities designed to enhance your relaxation and socialising experiences. We thoughtfully designed the amenities to seamlessly integrate with the private residences, offering spaces for fully enjoying one's time at home. We create, you make every day your best day.

Building Overview

Three elegant buildings featuring contemporary architecture rising two stories high.

A collection of 48 timeless design residences, including exceptional units to indulge individual tastes.

Open glass terraces and balconies.

Breathtaking views of the Mediterranean Sea and the Estepona mountain skyline.

Arrival Experience & Lobby

Exclusive private entrance for a controlled building access.

Dramatic lobby leading to elevators.

Artwork by the renowned artist Iñaki Ormaechea for the central space.

Security booth ensuring the safety of the area.

Parcel boxes to receive your online purchases 24/7.

A secure, covered garage.

Services

High-speed internet access across all public areas.

Music Digital Studio by the award-winning Bulwark Audio Recording Studio.

Electric vehicle charging stations available.

Car battery chargers available.

Indoor Facilities Features

Salon Lounge for special events with Bang & Olufsen® audio equipment.

Engaging, Versatile Haven for multiple purposes.

State-of-the-art Technogym®-equipped Fitness centre.

Storage room in the garage for each residence.

Bicycle storage area.

Outdoor Facilities Features

Barbecue area with OFYR® Cooking unit available for reservation.

Solarium Bar.

Yoga Studio.

Swimming Pool area

Swimming pool for all ages.

Poolside private cabanas.

Sun deck and conversational area.

Lounge chairs and conversational seatings.



VESCOM

Bolia

B&O
BANG & OLUFSEN

TECHNOGYM

OFYR

© 2024 One Estepona. All rights reserved – The plans and images presented in the document are approximate, the definitive ones will be those resulting from the execution of the project. They have no contractual value and may experience variations due to technical, legal or administrative requirements or the initiative of the Architects in charge of the works, without this implying a reduction in the level of quality.-.

Beachside Residences ONE ESTEPONA Cosmopolitan Finish

Fitness Centre

The wellness facilities include a Technogym-designed and equipped gymnasium featuring floor-to-ceiling windows overlooking the outdoor pool deck. Residents can enjoy adaptive workouts guided by Technogym technology for superior results.

Versatile Haven

The multiple-use room meets versatility and comfort. Designed to cater to your needs, whether it's a productive workspace, a cozy media room, or a library lounge with coffee. Embrace the family entertainment area, thoughtfully crafted to create joyful moments for all ages.

Salon Lounge

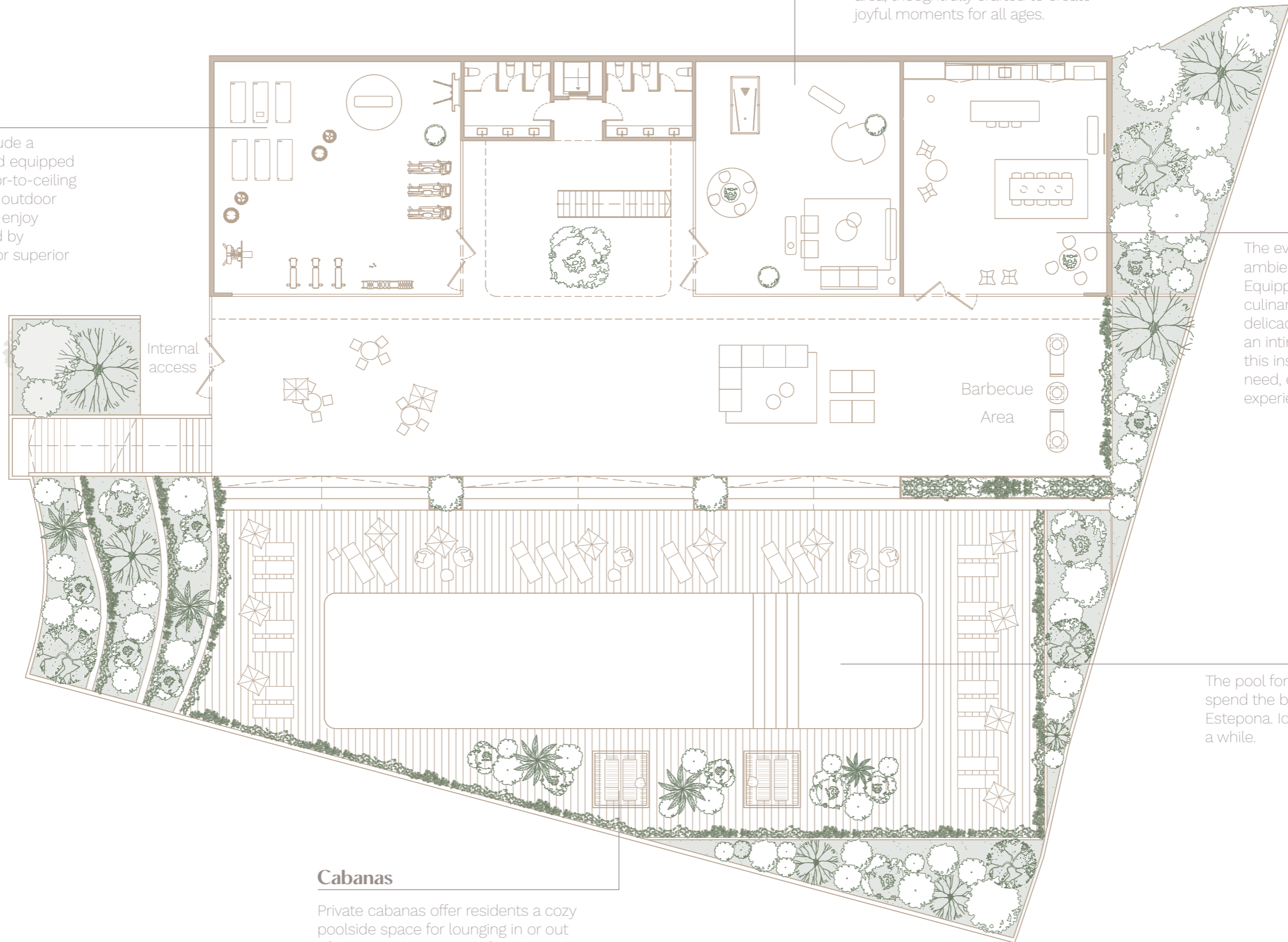
The event hosting room creates an ideal ambience for memorable celebrations. Equipped with a well-appointed kitchen, culinary enthusiasts can craft gourmet delicacies to delight guests. Whether an intimate gathering or a grand affair, this inspiring space caters to every need, ensuring an unforgettable experience for all attendees.

Swimming Pool

The pool for all ages is perfect to spend the beautiful summer days in Estepona. Ideal to refresh and relax for a while.

Cabanas

Private cabanas offer residents a cozy poolside space for lounging in or out of the sun, chatting with friends, and enjoying a snack, meal, or refreshments selected from the house menu and served by wait staff.





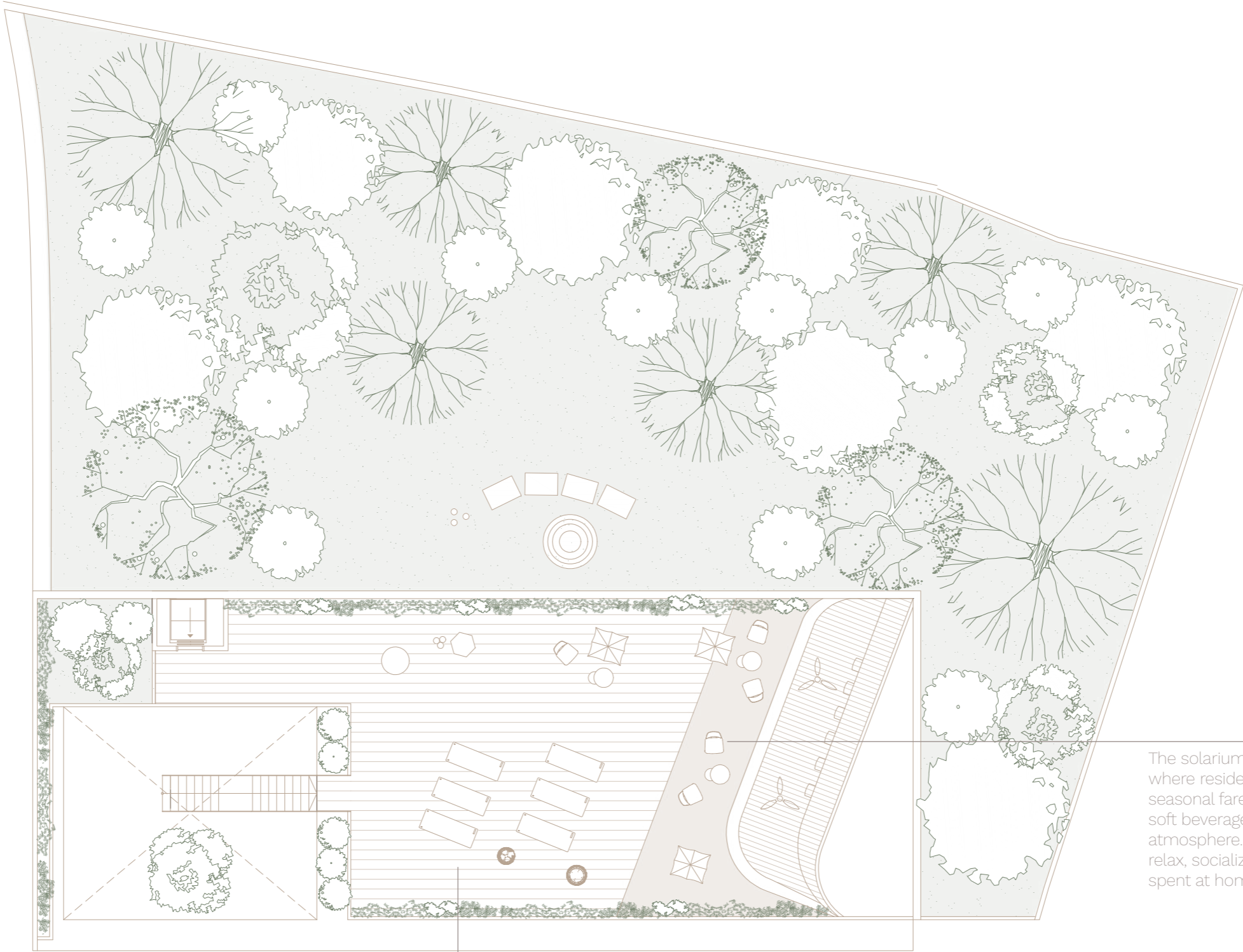
Fitness Centre with Technogym technology.



Multiple-use room for all ages.



Accessible Terrace - Solarium bar & Yoga Studio



Solarium Bar

The solarium bar is the perfect place where residents can enjoy light seasonal fare, craft cocktails, and soft beverages in an airy, elegant atmosphere. It is the ideal space to relax, socialize, and fully enjoy time spent at home.

Yoga Studio

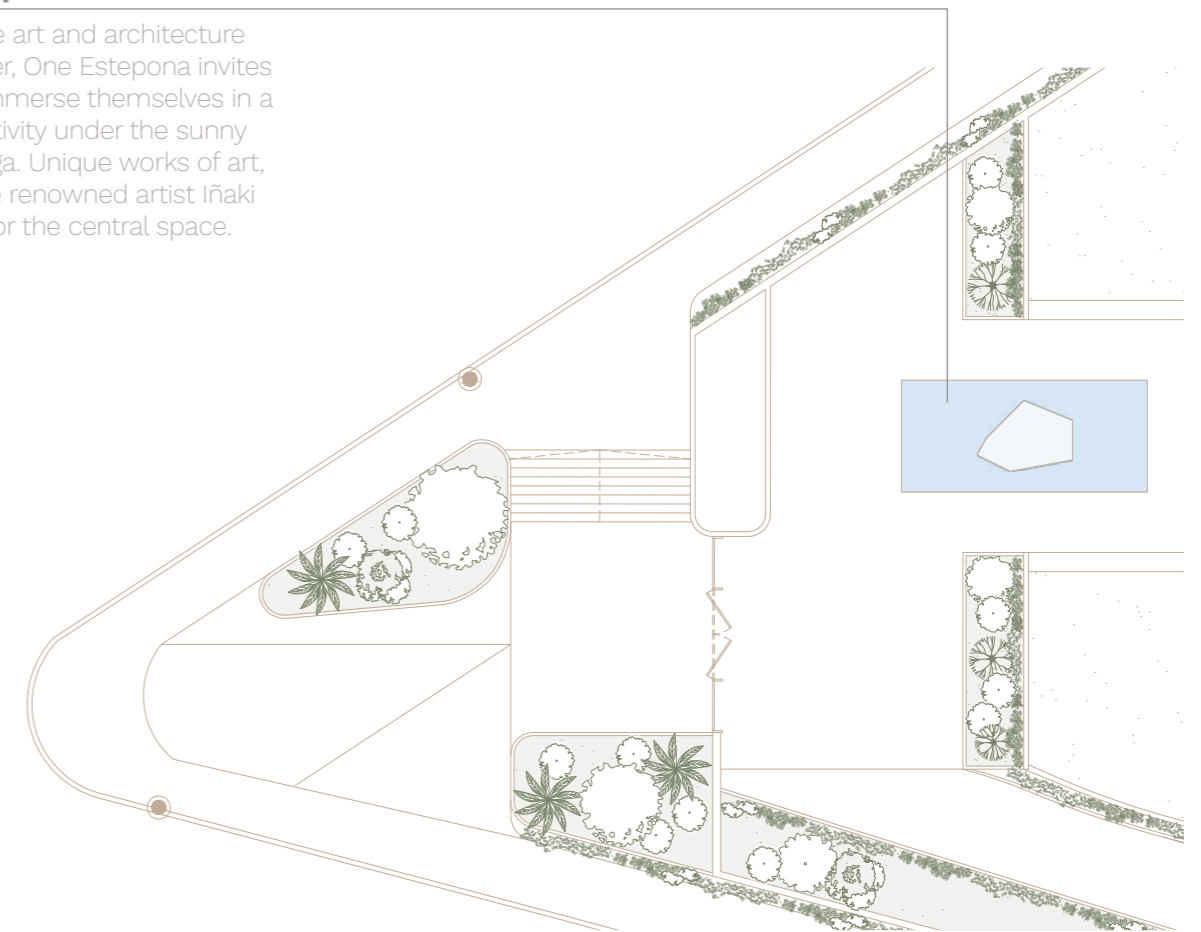
Overlooking the sea, the yoga studio offer a tranquil yet inspiring environment for well- being. Mats, blocks, straps, and other props are always available. It is ideally positioned to embrace natural light from sunrise to dusk sessions.



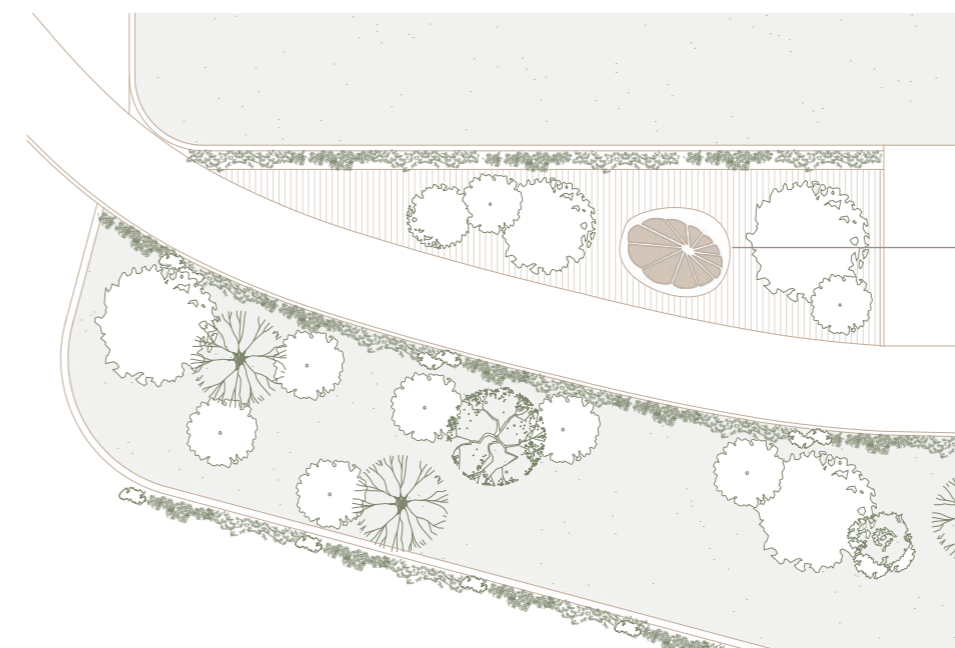
Secondary access to the complex

Comunal Spaces with Artworks

A place where art and architecture come together, One Estepona invites residents to immerse themselves in a world of creativity under the sunny skies of Malaga. Unique works of art, crafted by the renowned artist Iñaki Ormaechea for the central space.



Smart flower in common spaces



Smart Flower

We are embracing sustainability with Smartflower, a solar energy system inspired by nature. Its petal-like solar panels track the sun's movement, maximising energy capture by up to 40% compared to fixed panels. Smartflower offers an eco-friendly and visually appealing alternative for producing clean energy.

Indulge in the ultimate
Cosmopolitan living experience
at One Estepona.



(+34) 518 898 219



(+34) 659 101 720

Info@OneEstepona.com

Contact us



DEVELOPEMENT

ODD mile

CONSTRUCTION



ARCHITECTURE

NUMA
Homes

INTERIORS

ARQ
GEO

LANDSCAPE